

HARDWICKE NEIGHBOURHOOD
DEVELOPMENT PLAN REFERENDUM

THURSDAY 10 AUGUST 2017

INFORMATION STATEMENT

&

INFORMATION FOR VOTERS

Information Statement

A Referendum relating to the adoption of the Hardwicke Neighbourhood Development Plan will be held for the Hardwicke Neighbourhood Area on Thursday 10 August 2017.

This information sheet explains more about the Referendum that will be taking place.

The question asked at the Referendum will be:

Do you want Stroud District Council to use the Neighbourhood Plan for Hardwicke to help it decide planning applications in the neighbourhood area?

You vote by putting a cross (X) in the 'Yes' or 'No' box on the ballot paper.

If more people vote 'yes' than 'no' in the Referendum, then Stroud District Council will use the Hardwicke Neighbourhood Development Plan to help it to decide planning applications within Hardwicke.

The Neighbourhood Plan once adopted will then become part of the Development Plan used by the Local Planning Authority (Stroud District Council).

If more people vote 'no' than 'yes', in this Referendum or there is a tied vote, then planning applications will continue to be decided without reference to the Neighbourhood Development Plan as part of the Development Plan for the local area.

The Referendum will be conducted in accordance with procedures similar to those used at local government elections.

What is Neighbourhood Planning?

Neighbourhood planning was introduced under the Localism Act 2011 to give local communities more control in the planning of their neighbourhoods. It introduced new rights and powers to allow local communities to shape new development in their local area. It enables communities to develop a shared vision for their neighbourhood and deliver the sustainable development they need through planning policies relating to the development and use of land.

What is a neighbourhood area?

A neighbourhood area can cover single streets or large urban or rural areas. The boundaries of a neighbourhood area are put forward by:

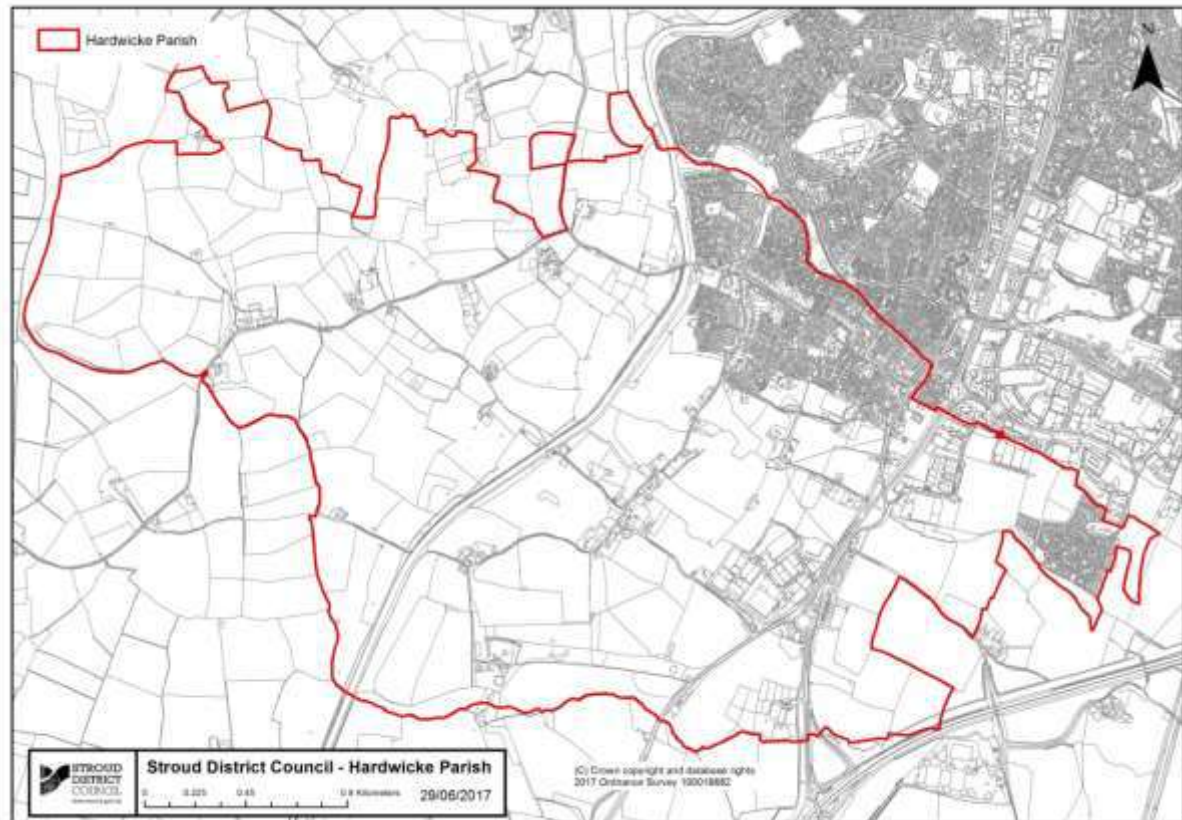
- Town or parish councils
- A neighbourhood forum a group of at least 21 people (in areas without a town or parish council)

What is a Development Plan?

In England, planning applications are determined by local planning authorities in accordance with the development plan. A development plan is a set of documents that set out the policies for the development and use of land across the entire local authority area.

Hardwicke Neighbourhood Area

The Referendum area is identified on the map below as the parish area of Hardwicke Parish and is the same as the area which has been designated as the Hardwicke Neighbourhood Plan area.



Referendum campaign costs

An individual or body can incur costs during the period of the Referendum for the purposes of campaigning in association with the Referendum.

The Referendum expenses limit that will apply to the Hardwicke Neighbourhood Development plan is £2,590.56. The number of people entitled to vote in the Referendum by reference to which this limit has been calculated is 3,874.

Specified documents

The following specified documents can be inspected on the Council's website at <https://www.stroud.gov.uk/environment/planning-and-building-control/planning-strategy/neighbourhood-planning/emerging-neighbourhood-plans/hardwicke-parish-council-plan> and at the following addresses, at the following times:

Reception Stroud District Council Ebley Mill Ebley Wharf Stroud GL5 4UB	9.00am – 5.00pm Monday – Thursday 9.00am – 4.30pm on Fridays
---	---

Quedgeley Library Bristol Road Quedgeley Gloucester GL2 4PE	Monday	10:00 am - 01:00 pm 02:00 pm - 05:00 pm
	Tuesday	10:00 am - 01:00 pm 02:00 pm - 05:00 pm
	Wednesday	02:00 pm - 05:00 pm
	Thursday	10:00 am - 01:00 pm 02:00 pm - 07:00 pm
	Friday	10:00 am - 01:00 pm 02:00 pm - 05:00 pm
	Saturday	10:00 am - 04:00 pm

The specified documents are:

- Hardwicke Neighbourhood Development Plan
- Report of the Independent Examiner
- Summary of the representations submitted to the Independent Examiner
- Statement by the local planning authority that the draft plan meets the basic conditions (Decision statement)
- Information Statement and Information for Voters

Who can vote?

A person is entitled to vote if at the time of the Referendum, they meet the eligibility criteria to vote in a local election for the area and if they live in the Referendum area. The eligibility criteria are:

- You are registered to vote in local government elections; and
- You are 18 years of age or over on Thursday 10 August 2017

If you are not registered, you won't be able to vote. You can check if you are registered by calling our Helpline on 01453 754886.

If you are not registered to vote, you can go online to www.gov.uk/register-to-vote with your national insurance number by midnight on **Tuesday 25 July 2017**. If you do not have access to the internet please call our helpline on 01453 754886.

How to vote

There are three ways of voting:

- In person on Thursday 10 August 2017 at your local polling station.
- You will receive a poll card confirming your polling station for this Referendum.
- Polling stations are open from 7am to 10pm.

By post

- If you have a postal vote already, you will receive a poll card confirming this.

- If you want to vote by post, you will need to complete an application form and send it to the Electoral Registration Officer to arrive by 5pm on Wednesday 26 July 2017 at the address below.
- Postal votes can be sent overseas but you need to think about whether you will have time to receive and return your completed postal vote by 10 August 2017.
- You should receive your postal vote approximately 10 days before polling day. If it doesn't arrive in time, you can ask for a replacement up to 5.00pm on 10 August 2017 by contacting our helpline 01453 754886.

By proxy

- If you have a proxy vote already, you will receive a poll card confirming this.
- If you can't get to the polling station and don't wish to vote by post, you may be able to vote by proxy. This means allowing somebody that you trust to vote on your behalf.
- If you want to vote by proxy, you will need to complete an application form and send it to the address below to arrive by 5.00pm on Wednesday 2 August 2017 at the address below.
- Postal and proxy vote application forms are available from Stroud District Council's website at: www.stroud.gov.uk/elections or you can call our helpline on 01453 754886 or email elections@stroud.gov.uk to request an application form.

How to find out more

- Further general information on neighbourhood planning is available at www.stroud.gov.uk/environment/planning-and-building-control/planning-strategy/neighbourhood-planning
- For queries about planning issues and neighbourhood planning in general, please contact ndp.consultation@stroud.gov.uk
- You can find specific documents on Hardwicke's neighbourhood Development Plan at : www.stroud.gov.uk/environment/planning-and-building-control/planning-strategy/neighbourhood-planning/emerging-neighbourhood-plans/hardwicke-parish-council-plan
- For more information about voting and the arrangements for this Referendum, please contact our Helpline on 01453 754886 or email: elections@stroud.gov.uk

Published on: Monday 3 July 2017

Electoral Services
 Stroud District Council
 Ebley Mill
 Ebley Wharf
 Stroud
 GL5 4UB